

SAFETY INSTRUCTIONS

1. Inspect tool and hoses before operation.
2. Do not operate if there is visible damage to the tool or any visible deterioration to the air hose and fitting.
3. Do not wear gloves while operating tool.
4. Never circumvent machine guarding.
5. Never attempt to repair the tool unless trained to do so. The results may cause injury.
6. Keep clothing, hair and fingers away from moving parts.
7. Do not carry tool by the hose.
8. Always wear approved eye protection.

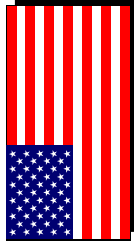
**KEEP FINGERS AWAY FROM MOVING PARTS.
MOVING PARTS MAY CAUSE BODILY HARM!
THIS TOOL USES COMPRESSED AIR TO OPERATE**

MAINTENANCE

1. Turn air supply off and disconnect air supply before performing any maintenance.
2. Always lubricate your tool using an in line oiler or by putting several drops of oil directly through the power pack each week.
3. Always use the proper hose size (inside diameter) which should be at least equal to the tool inlet pipe thread.

Simonds
World Leader in Pneumatic Hand Tools

MADE IN THE U.S.A



PARTS LIST

SERVICE INSTRUCTIONS

SIMONDS SA-2, #3 JAW HOUSING

USE WITH SP-002, SP-003

SP-004,SP-005,SP-006,SP-008

OPERATING INSTRUCTION

1. Do not exceed recommended wire sizes for jaws.
2. Jaws should be cleaned and foreign material removed weekly, more often if necessary.
3. Tools can be made either R.H. or L.H. by reversing jaws in housing. **DO NOT OVERTIGHTEN.**
4. If tool is used in assembly line production, check pivot screw for tightness daily.

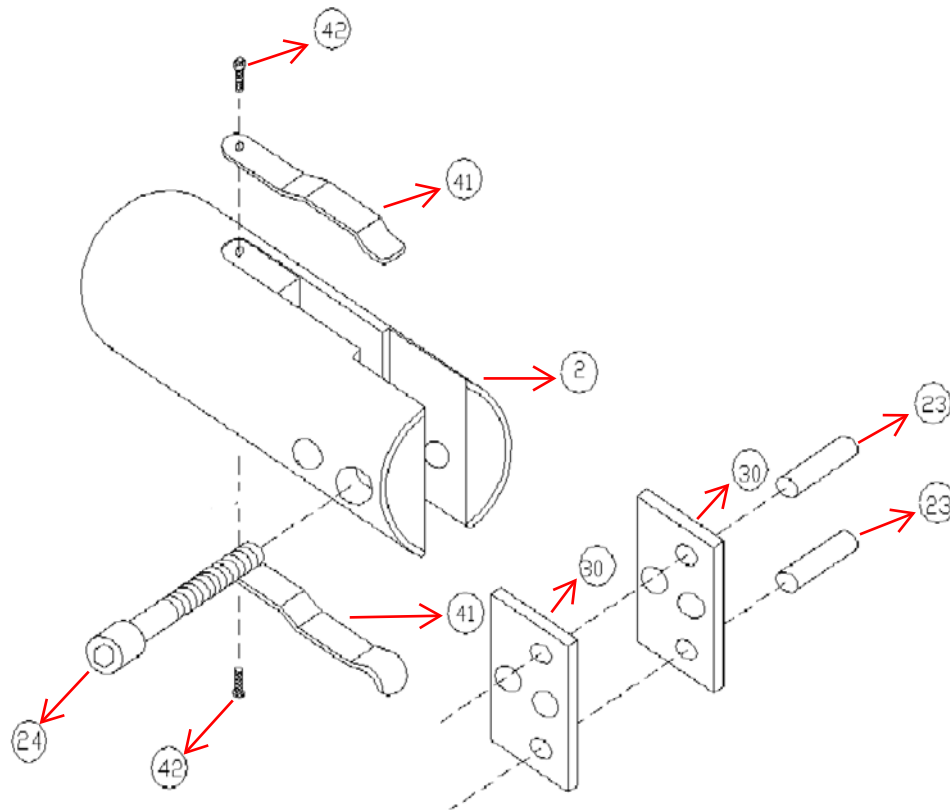
**SIMONDS SQUEEZE PLIERS JAWS ARE FACTORY
RESHARPENABLE, PLEASE CONSULT YOUR DISTRIBUTOR.**

**For more information visit our web site at:
www.simonds-inc.com**

Simonds
World Leader in Pneumatic Hand Tools

248 Elm St.
Southbridge, MA 01550
Tel: 866-764-3235
Fax: 508-765-5125

JANUARY 1, 2004



PART LIST FOR THE SA-2 JAW HOUSING
USE WITH SP-001, SP-002, SP-003, SP-004, SP-005, SP-006, SP-008

SA-2 JAW HOUSING COMPLETE

SA-2	JAW HOUSING COMPLETE
-------------	-----------------------------

PARTS PRICE LIST

DRW. NO.	DESCRIPTION	PART NO.
2	JAW HOUSING	3-2
23	PIVOT PIN	3-23-K2
24	JAW ASSEMBLY MOUNT SCREW	3-24
30	SIDE PLATE	3-30-K2
41	EXTERNAL JAW SPRING	3-41-K2
42	MOUNT SCREW	28-01-K10

Note: SA-2P has separate parts sheet