

SAFETY INSTRUCTIONS

1. Inspect tool and hoses before operation.
2. Have a locking air regulator in line so maximum pressure cannot be exceeded.
3. Do not operate if there is visible damage to the tool or any visible deterioration to the air hose and fitting.
4. Do not wear gloves while operating tool.
5. Never circumvent machine guarding.
6. Never attempt to repair the tool unless trained to do so. The results may cause injury.
7. Keep clothing, hair and fingers away from moving parts.
8. Do not carry tool by the hose.
9. Always wear approved eye protection.

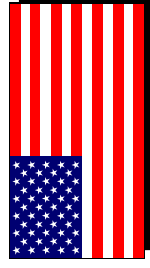
KEEP FINGERS AWAY FROM MOVING PARTS. MOVING PARTS MAY CAUSE BODILY HARM! THIS TOOL USES COMPRESSED AIR TO OPERATE

MAINTENANCE

1. Turn air supply off and disconnect air supply before performing any maintenance.
2. Be sure that air is clean and filtered.
3. Always lubricate your tool using an in line oilier or by putting several drops of oil directly through the power pack each week.
4. Always use the proper hose size (inside diameter) which should be at least equal to the tool inlet pipe thread.

For more information visit our web site at:

www.simonds-inc.com



MADE IN THE U.S.A

PARTS LIST

SERVICE INSTRUCTIONS

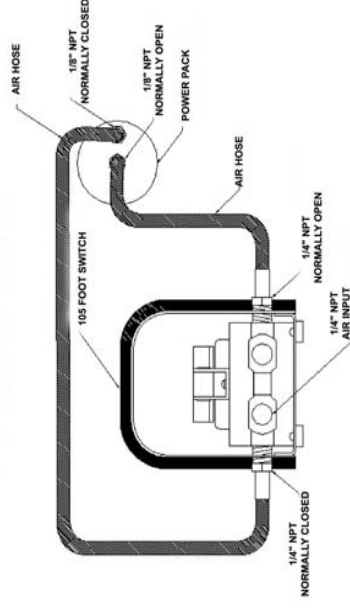
SIMONDS SQUEEZE PLIERS

MODEL NO. UC-90 CRIMPER

OPERATING INSTRUCTION

1. Maximum inlet air pressure is 100 psi. For longer tool life it is recommended to operate the tool at the lowest pressure to do the job, or as indicated on the tool.
2. Tools must be lubricated using an in line oilier located no more than 6 feet from the tool or oil directly through the power pack with several drops of pneumatic oil, weekly or as needed.
3. Jaws should be cleaned and foreign material removed weekly, more often if necessary.
4. If tool is used in assembly line production, check pivot screw for tightness daily.
5. To insert UC-9 head, apply air to power pack to drive piston forward. Disconnect air. Slid UC-9 head over cam and push down. Screw head on to power pack. Tighten #50 set screw to hold head.
6. Slide power pack in to A-202-4 holder, fasten to bench. Attach foot switch and hoses. Put inserts (optional) in to jaws and secure with #47 insert holding screw.

FOOTSWITCH ASSEMBLY:



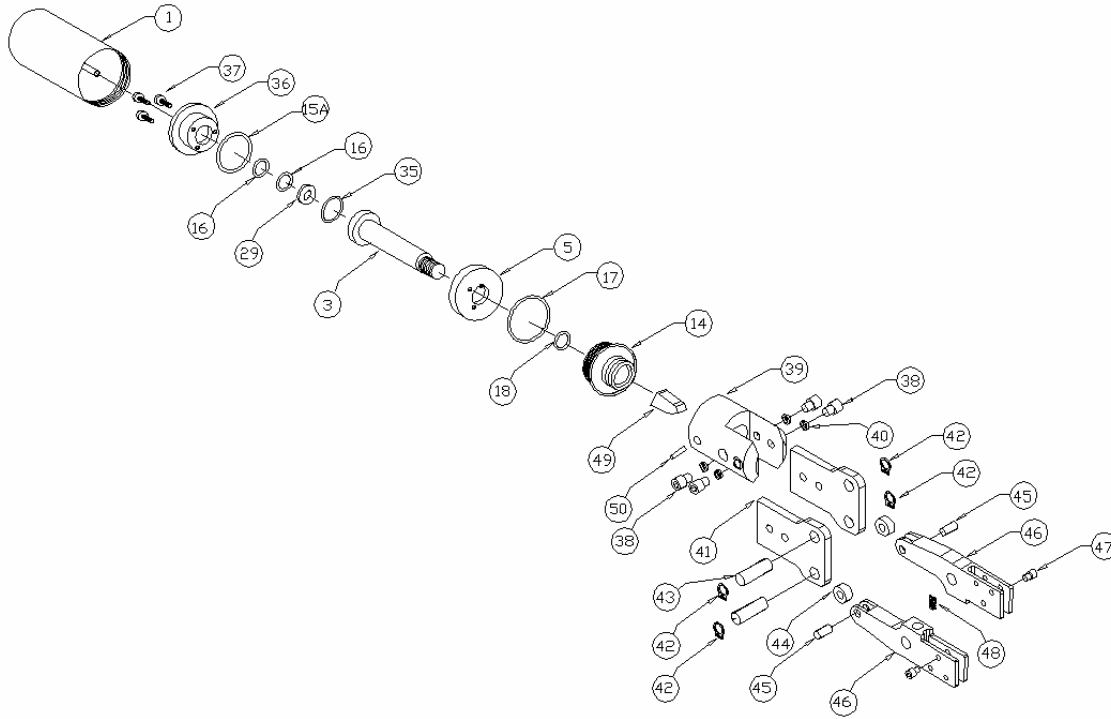
Simonds

World Leader in Pneumatic Hand Tools

248 Elm St.
Southbridge, MA 01550
Tel: 508-764-3235
Fax: 508-765-5125

Prices subject to change without notice.

4/30/2004



UC-90 CRIMPING TOOL

DRWG NO.	DESCRIPTION	PART NO.
1	PISTON HOUSING REMOTE	1-F-004
3	PISTON SHAFT	3-003
5	PISTON LOCK PLATE	5-004
14	END CAP	14-004
15A	O'RING PISTON SEAL	15A-004*
16	O'RING (2 required)	16-003-K10*
17	O'RING	17-004-K10*
18	O'RING	18-01*
29	PISTON WASHER	24-01
35	O'RING	35-003-K10*
36	PISTON SEAL HOLDER	36-004
37	MOUNT SCREW (3 required)	37-003-K10
38	JAW ASSEMBLY SCREW (4 required)	4-24A
39	JAW HOUSING	4-2B
40	LOCK WASHER (4 required)	4-10A
41	SIDE PLATE (set of 2)	4-30A
42	SNAP RING (4 required)	4-7A
43	PIVOT PIN (2 required)	4-9A
44	JAW ROLLER (2 required)	4-19-525-K2
45	ROLLER PIN (2 required)	4-20A
46	JAWS (sold as set only)	RUC-9
47	INSERT HOLDING SCREW (2 required)	38-RU9
48	INTERNAL JAW SPRING	4-8A
49	CAM	25-S
50	SET SCREW	4-3A

*INCLUDED IN PARTS KIT - #004-KIT
 AVAILABLE ACCESSORY - UC-L - Locator shelf

Not shown but included with UC-90 unit - two (2) #102-5 air hoses, one (1) A-202-4 bench stand, one (1) #105 footswitch

Simonds

World Leader in Pneumatic Hand Tools 248 ELM ST., SOUTHBRIDGE, MA 01550 508-764-3235

4/28/2004